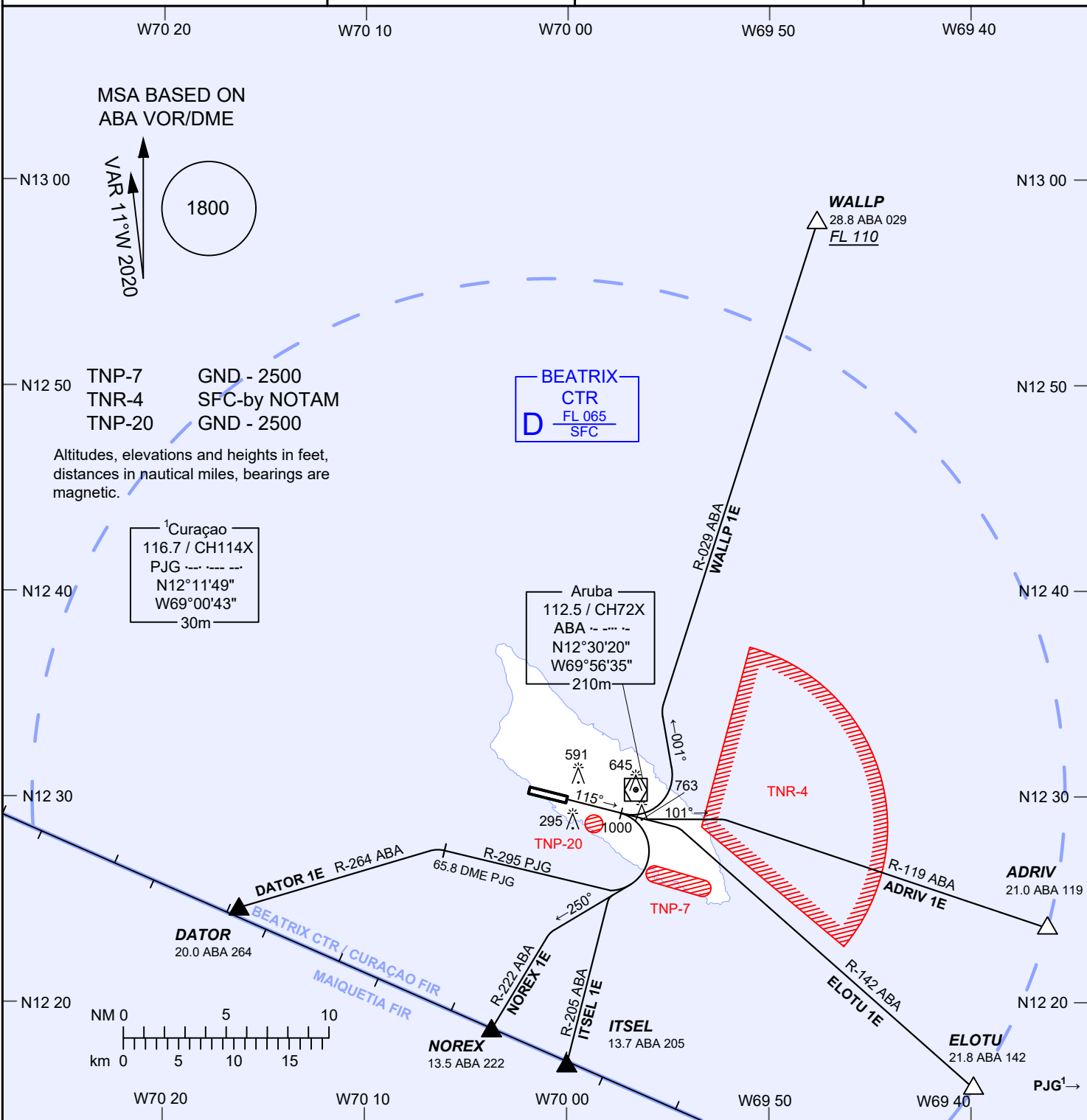


AIP DUTCH CARIBBEAN

STANDARD DEPARTURE CHART INSTRUMENT (VOR) - ICAO	AD ELEVATION: 62	BEATRIX:		RWY 11
	TRANS LEVEL: FL 040	TWR 118.0	APP 120.9	REINA BEATRIX INT'L
	TRANS ALT: 2500 (2438)	APRON 121.6	ATIS 132.1	(TNCA), ARUBA



ADRIV1E
Climb on runway magnetic track 115°, at or above 1000 ft AMSL turn left to magnetic track 101° to intercept and follow R-119 ABA to ADRIV (21.0 DME ABA). Requires minimum 255 ft/NM until 1100 ft AMSL. Advise ATC if unable to climb above TNR-4 ceiling prior to crossing boundary.

DATOR1E
Climb on runway magnetic track 115°, at or above 1000 ft AMSL turn right to intercept and follow R-295 PJG up to 65.8 DME PJG. Turn left to intercept and follow R-264 ABA to DATOR (20.0 DME ABA). Requires minimum 255 ft/NM until 1100 ft AMSL.

ELOTU1E
Climb on runway magnetic track 115°, at or above 1000 ft AMSL intercept and follow R-142 ABA to ELOTU (21.8 DME ABA). Requires minimum 255 ft/NM until 1100 ft AMSL.

ITSEL1E
Climb on runway magnetic track 115°, at or above 1000 ft AMSL turn right to magnetic track 250° to intercept and follow R-205 ABA to ITSEL (13.7 DME ABA). Requires minimum 255 ft/NM until 1100 ft AMSL.

NOREX1E
Climb on runway magnetic track 115°, at or above 1000 ft AMSL turn right to magnetic track 250° to intercept and follow R-222 ABA to NOREX (13.5 DME ABA). Requires minimum 255 ft/NM until 1100 ft AMSL.

WALLP1E
Climb on runway magnetic track 115°, at or above 1000 ft AMSL turn left to magnetic track 001° to intercept and follow R-029 ABA to WALLP (28.8 DME ABA) at or above FL110. After passing WALLP, expect ATC instructions to first en-route waypoint. Requires minimum 255 ft/NM until 1100 ft AMSL.

CHANGES: Editorial, MAGVAR2020.